



4Clicks
By Estimators For Estimators

4Clicks
CHATTER



Happy Holidays and A Glimpse of 2013

Michael Brown

As we draw close to the end of 2012, I offer my sincerest "Thank You" to our 4Clicks family: our clients, business partners, friends, and fellow 4Clicks' Team members. It is an honor and a privilege to be able to continue to serve all of you. I wish you and your families' safe and happy holidays!

2013 will most likely continue with the "do more with less" mandate we work under. Collaboration, transparency, and robust business processes supported by technology will become even more important. This trend will not only continue, but accelerate during 2013 and the foreseeable future.

Here are some of my thoughts for the upcoming year, and a preview as to how 4Clicks plans to support your ever-changing needs.

The Premier

Cost Estimating & Project Management Solution

In Today's Issue:

- By an Estimator for Estimators **1**
- Quote of the Month! **1**
- Version 2.615 is Here! **2**
- YouTube Videos **2**
- CEASEL™ to Debut **2**
- Custom Line Items **3**
- Custom Line Items (cont.) **4**
- Training 2013 **5**
- RSMMeans Cost Estimating **5**
- V2.616 and FMR **5**
- Professional Services **6**
- Events **7**
- Q&A Corner **8**
- 2013 RSMMeans Books **8**
- Share Your Knowledge **8**
- Partnering with Education **8**

1. Facility construction and operations budgets will continue to come under pressure – thus making the efficient use of available funds even more important.
2. Available funding will accelerate their shift from new construction to repair, maintenance, and sustainability projects.
3. The deployment and refinement of efficient construction delivery methods such as Integrated Project Delivery (IPD), Job Order Contracting (JOC), and Simplified Acquisition of Base Engineering Requirements (SABER) will continue to accelerate across all DOD and non-DOD Federal Departments and Agencies, State/County/Local Governments, Healthcare, Educational Institutions, Transportation Authorities and Airports, and even begin to enter the private sector.
4. Demand for robust, standardized, and transparent construction cost databases will continue to increase.
5. True cloud computing will continue to impact how the AECOO (Architecture, Engineering, Construction, Owners, Operations) conducts business on a day-to-day basis.

Michael

By an Estimator for Estimators

Quote of the month

"As you navigate through the rest of your life, be open to collaboration. Other people and other people's ideas are often better than your own. Find a group of people who challenge and inspire you, spend a lot of time with them, and it will change your life."

Amy Poehler

Version 2.615 is Here!

While many of the updates are behind the scenes, there are a few that you should really enjoy. Let's take a look at one here.

We've extended your ability to see the Material, Labor, and Equipment breakdowns in your line items when you integrate City Cost Index and O&P pricing into each line item.

Now instead of each line item being represented exactly like the book, the unit cost MLE breakdown now represents the adjusted MLE prices based on the CCI and O&P percentages being applied.

In addition, your reports can summarize the adjusted MLE totals for each division. Check out the **Estimate Details** and **Estimate List** reports. Turn on the **Print Extra Line Item Info** and/or **Print Division Header/Footers** options for helpful information.

YouTube Videos

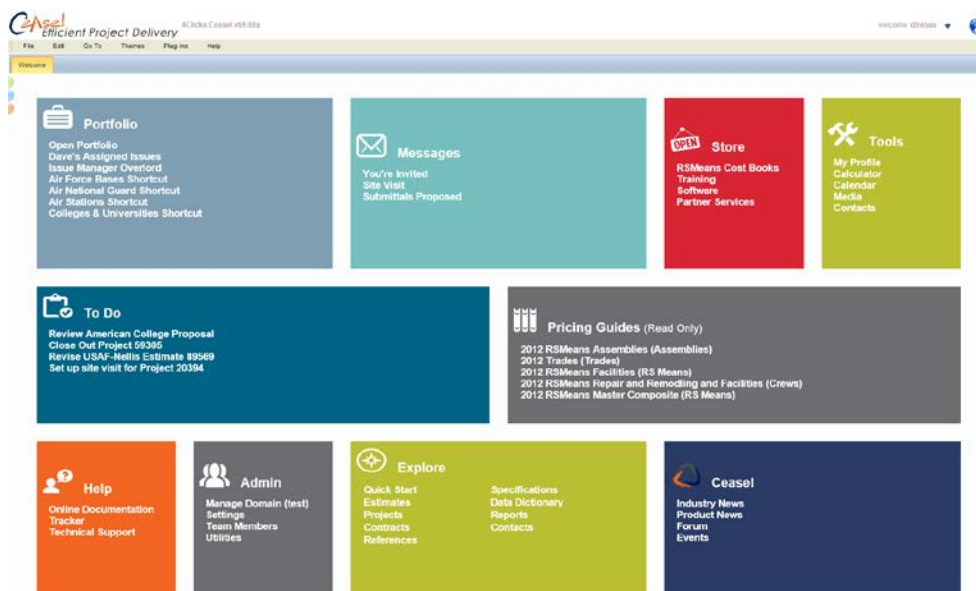
Have you checked out our YouTube site lately? You can get there from the YouTube button at the top right of our homepage, or you can simply click on this link: [4Clicks Solutions](#).

We've recently added a Training Playlist. It has several videos to teach you the basics of e4Clicks Project Estimator.

We plan on continuing to add more and more videos to serve you as best as possible. So keep visiting to see the new ones!

CEASEL™ to Debut

Our new cloud computing based, collaborative cost estimating application will make its debut over the next few months. Initially Ceasel Module1 will be the best online representation of RSMean Cost Data available and an integrated line item construction cost estimating application. Anyone currently using RSMean CostWorks™ or RSMean OnLine™ for cost estimating (versus occasional electronic access to RSMean line items), will immediately appreciate the speed, power, collaboration, security, and increased productivity available within Ceasel. If you are interested in a free trail of CEASEL, please contact us at info@4Clicks.com, or [download our factsheet](#).



The screenshot displays the Ceasel web application interface. The top navigation bar includes the Ceasel logo, the text "Efficient Project Delivery", and the user name "WELCOME DREW". Below the navigation bar is a dashboard with several colored tiles:

- Portfolio** (Blue): Open Portfolio, Dave's Assigned Issues, Issue Manager Overlord, Air Force Bases Shortcut, Air National Guard Shortcut, Air Stations Shortcut, Colleges & Universities Shortcut.
- Messages** (Teal): You're Invited, Site Visit, Submit a Proposal.
- Store** (Red): RSMean Cost Books, Training, Software, Partner Services.
- Tools** (Green): My Profile, Calculator, Calendar, Media, Contacts.
- To Do** (Dark Blue): Review American College Proposal, Close Out Project 59395, Revise USAF-Nellis Estimate 89569, Set up site visit for Project 20394.
- Pricing Guides (Read Only)** (Grey): 2012 RSMean Assemblies (Assemblies), 2012 Trades (Trades), 2012 RSMean Facilities (RS Mean), 2012 RSMean Repair and Remodelling and Facilities (Crews), 2012 RSMean Master Composite (RS Mean).
- Help** (Orange): Online Documentation, Tracker, Technical Support.
- Admin** (Dark Grey): Manage Domain (test), Settings, Team Members, Utilities.
- Explore** (Light Green): Quick Start, Estimates, Projects, Contracts, References.
- Specifications** (Light Green): Data Dictionary, Reports, Contacts.
- Ceasel** (Dark Blue): Industry News, Product News, Forums, Events.

Creating Custom and Alternate Line Items

So, how do you create a custom line item? There are a couple of different ways to create one. You can create one from scratch, or you can find a similar line item and customize it. Let's check out each way!

Custom Line Item from Scratch

Your line items can be found on the **Line Items** tab of the **Updating Estimate** window. This is where you normally **right-click** and open your guide.

This time, however, you want to **right-click** and choose a different option. The **Insert Custom Line Item** option allows you to create your custom item from scratch. It opens the **Update Line Item Details** window. The window opens without any information populated. Here you can fill out all of the custom info that you need. The highlighted fields – **Item**, **Description**, and **UM** – are required.

If you have the **Material**, **Labor**, and **Equipment** breakdown, you can put it in there, or you can simply put in a **Total**. There are several other fields that you can evaluate. You can protect the item from the **Reselect Guide** process with the **Protected Item** option if you desire, you can determine if the item is pre-priced or not, etc.

TOOL TIP: If you want to get really fancy, you can use the **Synchronize Values** option to tie the **Output**, **Labor hours**, **Labor**, and **Equipment** fields together. Changing the values up or down will affect the other fields proportionally.

Custom Line Items (continued)

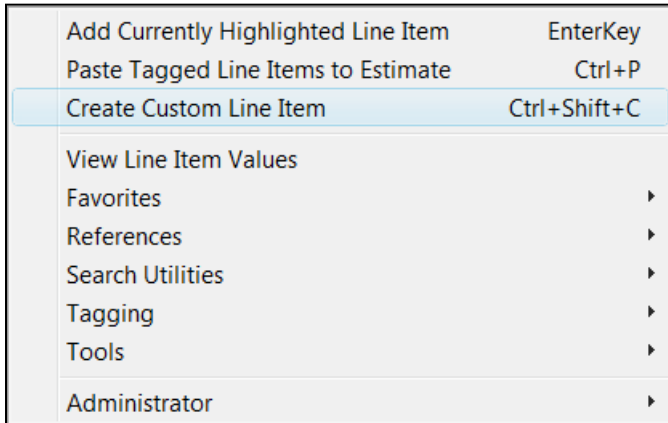
Custom Line Item from Guide

Now, what if you don't want to start from scratch? What if you want to take the hard work that RSMMeans (or other estimating experts have done) and then customize from that point?

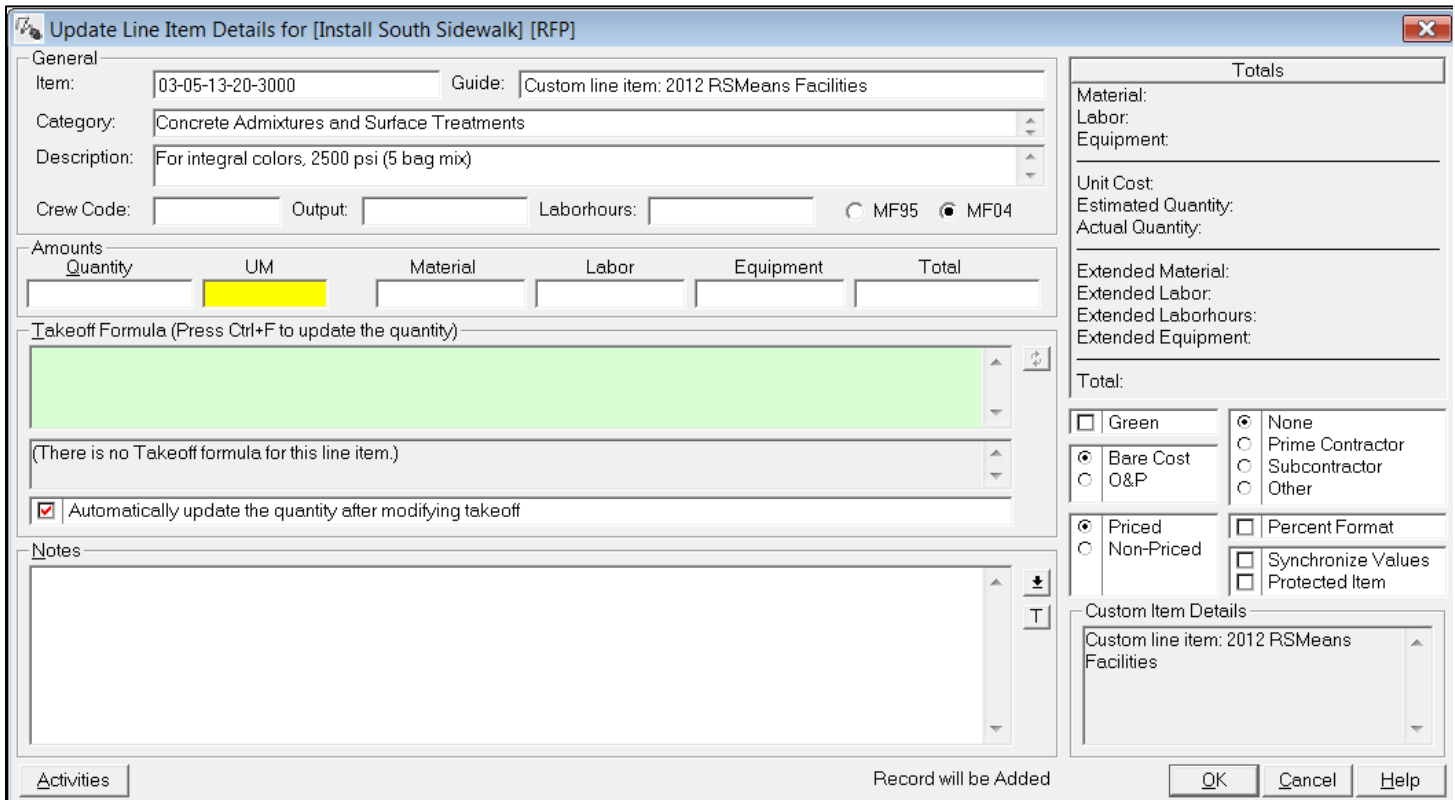
Sometimes you find a very similar line item in your guide, but the material costs are different. Maybe the item you find is a different size than is in the book, or maybe you need to estimate a specific manufacturer.

After you find a similar line item in the pricing guide, you can add it as a custom item. The example here is from the RSMMeans guides, but the process is the same regardless of the guide.

The **Create Custom Line Item** option opens the **Update Line Item Details** window.



This time, however, the information is populated with the information from the guide. You can change any of the information you desire.



Training 2013!

Here's our 2013 Regional Training Schedule. What better way for brand new e4Clicks users and those who could benefit from a refresher course! Sharpen your estimating skills, learn how to better use RSMMeans Cost Data, and even take a quick look at eTakeoff – an industry leading visual estimating and quantity take-off, QTO tool featuring advanced Pattern Search technology.

2013 e4Clicks Project Estimator TRAINING DATES		
2-Day Introductory	San Antonio, TX	13-14 February
2-Day Introductory	Las Vegas, NV	13-14 March
2-Day Introductory	Atlanta, GA	10-11 April
2-Day Advanced	San Antonio, TX	15-16 May
2-Day Advanced	Las Vegas, NV	19-20 June

"My favorite part of the class was open discussion by instructor, insights on estimating in general, owner/contractor relationships, lessons learned, estimating principles, etc."

- U.S. Army

Don't forget we are an Approved Education Provider through AACE International; so in addition to having some fun and learning new skills, you will earn Continuing Education Credits for your attendance! All regional classes are first come, first serve; so reserve your seat before we're sold out! [Register Now](#)

New 'Cost Estimating with RSMMeans' Training Class!!!

What do you think about an estimating class? Many of you have probably been to one of our amazing e4Clicks Project Estimating training classes where we teach you about using your estimating software. How about we take that same energy and experience and funnel it into teaching how to estimate using RSMMeans?

We are planning to offer various levels of estimating – from basic to advanced. We've equipped you to use e4Clicks, but now we want to help you *actually* estimate.

We have heard from many of you that you could use the knowledge, and we think we could fill the need.

Please email us at info@4Clicks.com today, and let us know if you'd be interested in a Regional RSMMeans Line Item Cost Estimating Class and the best location for you. Or, let us know if you'd like a session at your own facility.

Coming Soon – V2.616 and the FMR

We introduced V2.615 earlier in this newsletter, and V2.616 is close on its heels! We are very excited to introduce our new electronic RSMMeans database – the **Facilities Maintenance & Repair (FMR) Cost Data!** The new version incorporates the FMR as well as other nice enhancements.

The FMR is broken into 3 difference sections. It's basically 3 different books all in one. Here's how RSMMeans describes the data sections.

"The **Maintenance & Repair** section is a listing of common maintenance tasks performed at facilities. The tasks include removal and replacement, repair, and refinishing."

"The **Preventive Maintenance [PM]** section provides the framework for a complete PM program. The establishment of a program is frequently hindered by the lack of a comprehensive list of equipment, actual PM steps, and budget documentation. This section fulfills all these needs."

The **General Maintenance** "section provides labor-hour estimates and costs to perform day-to-day cleaning. The data is used to estimate cleaning times, compare and assess estimates submitted by cleaning companies, or to budget in-house staff. The information is divided into *Interior* and *Exterior* maintenance."

Professional Services

4Clicks offers a wide range of professional services to help optimize your cost estimating and efficient project delivery program implementations (JOC, SABER, IDIQ, etc.) – both directly and with the support of our strategic partners.

Customized Onsite Training

- 4Clicks provides onsite software training tailored to our client's requirements. Hands-on computer training is highly recommended. A printed training manual is provided for each student. Class size is limited to assure effectiveness. Introductory, refresher, and advanced classes are available.

Cost Data

- Unit Price Books (UPB) – Assistance in the creation of a localized RSMeans UPB, custom UPB, or IDIQ cost book, or a combination of both.
- Line Item Development – We can develop additional custom line items for your vertical or horizontal infrastructure to account for unique requirements.
- Specifications – Specifications can be associated to estimates and printed in summary or detail formats. Customized specification development is available.

JOC/SABER Program Development, Support, Maintenance, and Auditing

- Strategic Planning for JOC
- RFP Development
- JOC Program Alignment, Partnering, and Learning
- Owner assistance in creating estimates and performing technical evaluations.
- Procurement Assistance
- Ongoing Assessment
- Software support is provided via telephone and email for Owners and their JOC/SABER contractor(s).
- Owner UPB support may include adding additional line items on a predetermined basis and/or updating the UPB on a scheduled basis.



Events

RECENT



IFMA 2012 Workplace Presentation – November 1, 2012

Project Delivery Methods of the Future - IFMA WORLDWORKPLACE 2012 – San Antonio, TX – Job Order Contracting (JOC) and Integrated Project Delivery (IPD) converge with Cloud Computing, Big Data, and BIM.

[Paper](#) - [Presentation](#)

UPCOMING



Optimize Your RSMeans Line Item Estimating– December 11, 2012

WebCast – 1PM EST

Join Nick Cholakis, Account Executive, 4Clicks Solutions, LLC, David Snedaker, President of eTakeoff, and Bob Gair, Principal, RSMeans for a discussion of accurate, transparent, cost estimating ... featuring the best representation of RSMeans Cost Data available. Imagine RSMeans Cost Data enhanced from approximately 80,000 to 400,000 line time, with Modifiers and full descriptions!

And that's not all ... visual estimating and quantity take-off featuring advanced Pattern Search, program management for JOC, SABER, IDIQ and more, and document management software are also integrated within one powerful, easy-to-use application.

[Register Here](#)



National Institute of Science BUILDING INNOVATION 2013 – January 7, 2013

Booth #5, Washington, D.C., Washington Marriott at Metro Center, January 7-11

Be one of the first to see and experience an advanced, collaborative, CLOUD COMPUTING system for construction cost estimating and efficient project delivery.

[Paper](#)

Q & A Corner

Q: What is the difference between a Custom line item and an Alternate line item?

A: First of all ... you are correct. There is a difference between Custom and Alternate line items.

Custom line items do not exist in any pricing guide. They exist only in an estimate.

Alternate line items exist in and are added from the Alternate pricing guide. The Alternate pricing guide is your customizable pricing guide. Your team manages and shares this guide. It is opened and used like any other pricing guide.

TOOL TIP: On the **Line Items** tab of the **Updating Estimate** window, you can use the **Custom** and **Alternate** tabs on the bottom right of the line items list to filter the items you see.

Share Your Knowledge

[Here's a great place for you](#)

Real Property Owners, Contractors, Subcontractors, AEs, Estimators, and Project Managers – Ask questions and discuss various topics with your peers. Create your own TOPIC, or enter an existing area.

2013 RSMeans Cost Books

Just a reminder that you can purchase printed RSMeans Cost Books from us directly.



Free shipping, plus a 20% discount on RSMeans hardcopy Cost Books!

All of your popular RSMeans cost books are on [our GSA schedule](#). Write up your software and book needs all on one purchase order!

Partnering with Education

4Clicks is pleased to support College and University professors and student with our premier cost estimating software and associated electronic RSMeans Cost Data exclusively for educational use.

[Sign up today!](#)



Use Our FedEx

Use our FEDEX corporate agreement account number to receive a discount to create, print, and deliver documents nationwide, at over 1,800 FedEx Office locations... [More information.](#)

Feedback

We can't say it enough - our success is based on great clients and partners. [Please tell us what we are doing right, or what we are doing wrong... and send us information for our newsletter!](#)



4Clicks
By Estimators For Estimators™



www.4Clicks.com

4Clicks Solutions, LLC
P.O. Box 76884
Colorado Springs, CO 80970

Technical Support:
719.574.7724
866.742.5425
support@4Clicks.com

Sales:
719.574.7721
866.438.4254
sales@4Clicks.com