



4Clicks
By Estimators For Estimators

4Clicks
CHATTER



**The Premier
Cost Estimating &
Project Management
Solution**

In Today's Issue:

By an Estimator for Estimators **1**

Quote of the Month! **1**

RSMeans CCI Update **2**

NEW 4Clicks Webinar **3**

2011 Training Class Schedule **3**

NEWS - Estimating Systems Closes **3**

Q & A Corner **4**

Feedback **4**

By an Estimator for Estimators

Beyond your SABER/JOC contracts, take advantage of your **Project Estimator™** to manage your **IDIQ** & **AE** contracts.

IDIQ Contracts

Making your daily cost estimating and project management tasks easier is our job! And, thanks to great clients like you, we get comments and suggestions to improve the product all the time. We gladly do whatever we can to server you better!

Did you know that you already have the solution to manage all of your contracts? Project Estimator easily handles your IDIQ's, AE's, and more.

Do you have a Painting, Finishing, Roofing, Paving, Electrical, Mechanical, or any type of IDIQ? Simply send us your IDIQ Price Guide (or spreadsheet), and we can upload it into your program. Just connect us with the right player on your team, and we can have you up and rolling in days.

Your new IDIQ guides will act similar to your RSMeans' guides. The prices are protected against changes, comparison reports and electronic technical evaluations can be done, and estimates can be updated to next year's prices in seconds!

AE's Using Project Estimator

More and more architecture-engineering (AE) firms are using e4Clicks to provide cutting edge client services.

Imagine your AE's with the ability to do virtual plan estimating, proposal development, milestone and fund tracking, square foot estimating, and assemblies. All this is available in one place - the same application you are using and with the same cost guide!

Finally, you, your AE's, and your contractors can all be working apples to apples to apples.

We are working hard to get you the tools you need to simplify your daily tasks. We hope the ability to manage all of your contracts on one platform serves this goal.

Michael Brown, Founder and President

Quote of the month

"Each of us is carving a stone, erecting a column, or cutting a piece of stained glass in the construction of something much bigger than ourselves."

- Adrienne Clarkson

Development Corner

RSMeans CCI Update

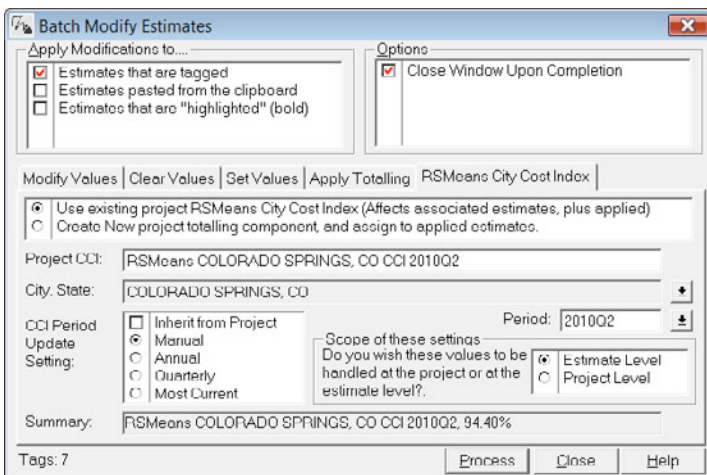
How many of you are using the new RSMeans City Cost Index totaling component type? Not sure? Give us a call, and we can help you figure it out.

This new totaling component type allows you to have multiple CCI's in a given project easily and seamlessly. This, for example, makes handling modifications using different CCI quarters more simple than ever.

Here, we would like to discuss updating CCI values from quarter to quarter to give us a good idea of how the process works. Let's say we created a project in January using the 2010 CCI. Now, it's July, and we need to update the CCI to quarter two, or 2010Q2.

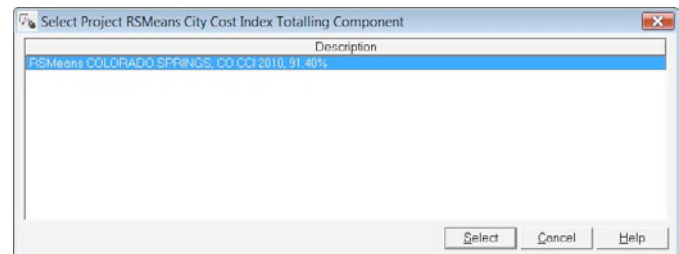
Our RSMeans CCI totaling component is set at the Estimate level; so we can have differing values of the CCI in our project. We'll use Batch Modification so we can update some or all of them.

We simply need to tag the estimates we would like to update and use batch modification. To open our **Batch Modify Estimates** window, we can right-click, select **Process Tagged Estimates**, and select **Batch Modify tagged estimates**, or we can press **Ctrl+M**, or we can use our new Batch Modify tool bar icon.

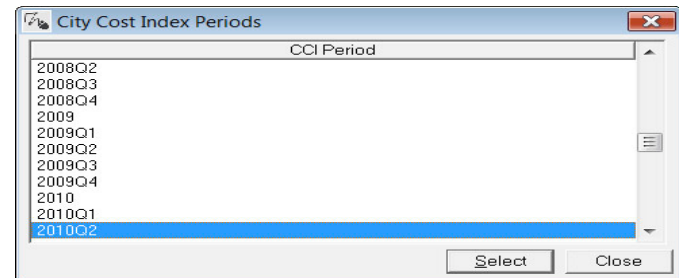


The fifth tab of this window is **RSMeans City Cost Index**. We can click on this tab and simply walk down the rest of the window.

1. We will use an existing CCI from this project because we are simply updating the quarter and not changing cities.
2. Double-clicking in the **Project CCI** field will allow us to select our city.



3. In this case, we are using **Manual** for our update setting; so we will simply double-click in the **Period** field and select **2010Q2**.



4. Finally, we can keep this at the **Estimate Level** if we want the option to have multiple CCI's in our project.

We have just updated our tagged estimates to CCI 2010Q2. This took them from the original CCI percentage of 91.4% and updated them to 94.4%.

Feel free to play with the other settings or give us a holler and we can walk you through them!

Please note: Be sure that everyone on your team is setup this way. This includes owners, AE's, contracting, as well as prime and subcontractors – everyone that creates estimates and shares them with other users. In 2011, we will work with most of you to move towards this way of processing RSMeans CCI's.

4Clicks WebCast

Project Estimator for JOC/SABER/SATOC/IDIQ & More!

We've put together an on-line seminar for people that don't currently use e4Clicks Project Estimator. So, if you know of anyone that is new to JOC, or is familiar with JOC but using spreadsheets, or another software package, please let them know!

Attendees will learn how to efficiently use reliable information and robust software tools to help estimate, bid, and manage projects with success.

JOC is a proven, efficient delivery mechanism for facility repair, renovation, and sustainability, and no one implements JOC in software better than 4Clicks.

Plus, Project Estimator enables management of multiple projects and contractors from a single application: JOC, SATOC, IDIQ, MATOC, MACC, BOCA, BOA and more!

Participants will also see how to more easily access and use RSMMeans cost data, and leverage the power of integrated document management and electronic take-off / visual estimating.

#1 | Basic review of JOC as a proven, robust, and efficient construction project delivery method for facility repair, renovation, and sustainability projects.

#2 | The value of an exclusive 400,000+ extended RSMMeans line item cost database and powerful tools to easily create and update cost estimates.

#3 | How DOD "Owners," Contractors, and AE's can better communicate to mitigate estimating errors, reduce project costs and timelines.

#4 | Learn how to manage multiple contracts from a single application.

Register Today – 60-Minute WebCast – No Cost



Join Us!
 October 14, 2010
 2PM (EST)
 FREE 4Clicks WebCast

In the News

ESI – Estimating Systems Inc. Closes

Estimating Systems Inc., providers of PULSAR software for JOC, announced its closing in July of this year.

While saddened by this event, we can report that Al Cleveland, former ESI General Manager, is working to support organizations transition to e4Clicks Project Estimator.

"I believe that 4Clicks' proven software, excellent customer service, and partnership with RSMMeans makes Project Estimator the logical choice for former PULSAR users."

– Al Cleveland, Former General Manager, Estimating Systems, Inc.

If you currently are using PULSAR, or know of an organization needing assistance, please contact us at 866-438-4254.

2011 Training Class Schedule

Whether You're Just Getting Started, Or Want to Learn What's New!

On-site/Captive Training

A 4Clicks trainer comes to your location, saving time and money. Customizing the session to fit your specific needs is also possible - One and two day sessions.

Regional Training

Hands-on training at selected locations - Three day session, per below schedule.

Virtual Training

On-line session intended as an overview of key software capabilities, or can be specialized as a focus on a specific function – One hour session.

San Antonio, TX	February 15 to 17
Las Vegas, NV	March 15 to 17
Colorado Springs, CO	April 19 to 21
San Antonio, TX	June 7 to 9
Las Vegas, NV	July 12 to 14
Colorado Springs, CO	August 16 to 18

Q & A Corner

Q: How do we get started if we've never had a JOC/SABER IDIQ/MATOC/SATOC/MAC/POCA BOA ... program?

A: You may wish to locate a consultant to provide an initial JOC / SABER (and other program) set-up service. We can help you establish specifications for this search.

As with any construction delivery method it's also important to conduct an evaluation of current capabilities and potential requirements, facilitate "Stakeholder" buy-in, assess in-house design capabilities, and to determine types of project to be included.

Additional considerations include price guide selection/development, software requirements, procurement processes and procedures, and development of contract documents.

You could also contact a base/owner that currently has a successful JOC program in place.

We can point you to some of our clients Air Force to Air Force, Army to Army, Navy to Navy ...



See our *NEW* set of FACT SHEETS outlining the benefits of e4Clicks Estimator to [DOD sites](#), [Owners](#), [Contractors](#), and [AEs](#). Each document focuses on features specific to your needs.



Feedback

The Best Clients

Our success is based on great clients. We love to hear from you on what were doing right, doing wrong, or not doing at all.

We encourage and appreciate your comments and feedback. Give us your thoughts on this newsletter; tell us what you'd like to read and share with your team.



www.4Clicks.com

4Clicks Solutions, LLC
P.O. Box 76884
Colorado Springs, CO 80970

Technical Support:
719.574.7724
866.742.5425
support@4Clicks.com

Sales:
719.574.7721
866.438.4254
sales@4Clicks.com

[Sign up at the bottom of our home page to receive these newsletters directly.](#)